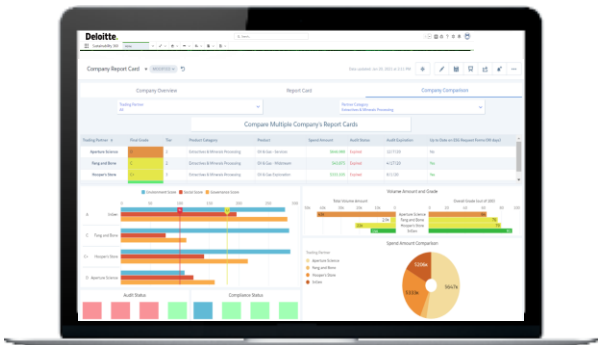




**Deloitte.**  
Digital

# Sustainability 360™

The regulatory landscape is rapidly evolving. ESG risks are rising. Maintaining visibility and improving performance is critical. Deloitte's Sustainability 360™, powered by Salesforce, is a modular sustainability management as a service offering designed to help you gain holistic visibility into your sustainability performance, detect and mitigate risk, and illuminate operational improvement opportunities—while providing continuous transparency for your stakeholders and enabling you to maintain a pulse on evolving regulatory requirements.



## FEATURES

### Enablement marketplace

Curated selection of asset management solutions and low and zero-carbon technologies

### Carbon inset origination

Activate emissions reduction monetisation pathways through the origination of carbon insets

### Green finance programs

Sustainability-linked finance programs designed to improve access to capital at differentiated rates

### Tax rebate & incentive support

Tailored guidance on how to leverage available tax rebates and incentives to help reduce investment hurdles.

### Carbon inset origination

Activate emissions reduction monetisation pathways through the origination of carbon insets.

## BENEFITS



Determine regulatory compliance requirements



Collect ESG data in line with regulatory compliance requirements



Establish carbon footprint & ESG baseline across various dimensions



Identify improvement opportunities and risks



Develop and implement an improvement roadmap



Provide continuous transparency to stakeholders

## CONTACT

**Yanis Guzel**  
Director  
Deloitte AU  
[yguzel@deloitte.com.au](mailto:yguzel@deloitte.com.au)